

2017

AP

CollegeBoard

AP Calculus AB

Free-Response Questions

h (feet)	0	2	5	10
$A(h)$ (square feet)	50.3	14.4	6.5	2.9

1. A tank has a height of 10 feet. The area of the horizontal cross section of the tank at height h feet is given by the function A , where $A(h)$ is measured in square feet. The function A is continuous and decreases as h increases. Selected values for $A(h)$ are given in the table above.

- (a) Use a left Riemann sum with the three subintervals indicated by the data in the table to approximate the volume of the tank. Indicate units of measure.

Do not write beyond this border.

Do not write beyond this border.

- (b) Does the approximation in part (a) overestimate or underestimate the volume of the tank? Explain your reasoning.

- (c) The area, in square feet, of the horizontal cross section at height h feet is modeled by the function f given by $f(h) = \frac{50.3}{e^{0.2h} + h}$. Based on this model, find the volume of the tank. Indicate units of measure.

- (d) Water is pumped into the tank. When the height of the water is 5 feet, the height is increasing at the rate of 0.26 foot per minute. Using the model from part (c), find the rate at which the volume of water is changing with respect to time when the height of the water is 5 feet. Indicate units of measure.

Do not write beyond this border.

2

2

2

2

2

2

2

2

2

2

2. When a certain grocery store opens, it has 50 pounds of bananas on a display table. Customers remove bananas from the display table at a rate modeled by

$$f(t) = 10 + (0.8t) \sin\left(\frac{t^3}{100}\right) \text{ for } 0 < t \leq 12,$$

where $f(t)$ is measured in pounds per hour and t is the number of hours after the store opened. After the store has been open for three hours, store employees add bananas to the display table at a rate modeled by

$$g(t) = 3 + 2.4 \ln(t^2 + 2t) \text{ for } 3 < t \leq 12,$$

where $g(t)$ is measured in pounds per hour and t is the number of hours after the store opened.

- (a) How many pounds of bananas are removed from the display table during the first 2 hours the store is open?

- (b) Find $f'(7)$. Using correct units, explain the meaning of $f'(7)$ in the context of the problem.

Do not write beyond this border.

2

2

2

2

2

2

2

2

2

2

(c) Is the number of pounds of bananas on the display table increasing or decreasing at time $t = 5$? Give a reason for your answer.

Do not write beyond this border.

(d) How many pounds of bananas are on the display table at time $t = 8$?

Do not write beyond this border.

3



3



3



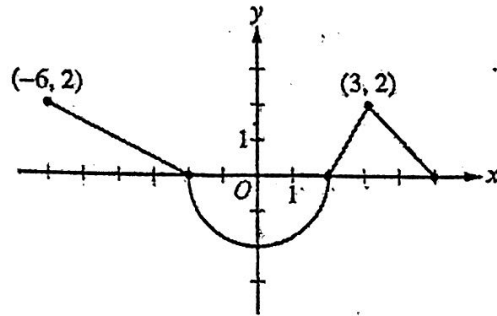
3



3



NO CALCULATOR ALLOWED

Graph of f'

3. The function f is differentiable on the closed interval $[-6, 5]$ and satisfies $f(-2) = 7$. The graph of f' , the derivative of f , consists of a semicircle and three line segments, as shown in the figure above.

(a) Find the values of $f(-6)$ and $f(5)$.

(b) On what intervals is f increasing? Justify your answer.

Do not write beyond this border.

Do not write beyond this border.

3



3



3



3



3



NO CALCULATOR ALLOWED

(c) Find the absolute minimum value of f on the closed interval $[-6, 5]$. Justify your answer.

Do not write beyond this border.

(d) For each of $f''(-5)$ and $f''(3)$, find the value or explain why it does not exist.

4



4



4



4



4



NO CALCULATOR ALLOWED

4. At time $t = 0$, a boiled potato is taken from a pot on a stove and left to cool in a kitchen. The internal temperature of the potato is 91 degrees Celsius ($^{\circ}\text{C}$) at time $t = 0$, and the internal temperature of the potato is greater than 27°C for all times $t > 0$. The internal temperature of the potato at time t minutes can be modeled by the function H that satisfies the differential equation $\frac{dH}{dt} = -\frac{1}{4}(H - 27)$, where $H(t)$ is measured in degrees Celsius and $H(0) = 91$.
- (a) Write an equation for the line tangent to the graph of H at $t = 0$. Use this equation to approximate the internal temperature of the potato at time $t = 3$.

- (b) Use $\frac{d^2H}{dt^2}$ to determine whether your answer in part (a) is an underestimate or an overestimate of the internal temperature of the potato at time $t = 3$.

Do not write beyond this border.

Do not write beyond this border.

NO CALCULATOR ALLOWED

- (c) For $t < 10$, an alternate model for the internal temperature of the potato at time t minutes is the function G that satisfies the differential equation $\frac{dG}{dt} = -(G - 27)^{2/3}$, where $G(t)$ is measured in degrees Celsius and $G(0) = 91$. Find an expression for $G(t)$. Based on this model, what is the internal temperature of the potato at time $t = 3$?

Do not write beyond this border.

5

5

5

5

5

5

5

5

5

5

NO CALCULATOR ALLOWED

5. Two particles move along the x -axis. For $0 \leq t \leq 8$, the position of particle P at time t is given by $x_P(t) = \ln(t^2 - 2t + 10)$, while the velocity of particle Q at time t is given by $v_Q(t) = t^2 - 8t + 15$. Particle Q is at position $x = 5$ at time $t = 0$.

(a) For $0 \leq t \leq 8$, when is particle P moving to the left?

(b) For $0 \leq t \leq 8$, find all times t during which the two particles travel in the same direction.

Do not write beyond this border.

5

5

5

5

5

5

5

5

5

5

NO CALCULATOR ALLOWED

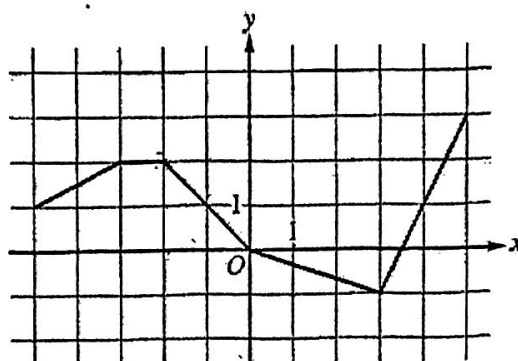
- (c) Find the acceleration of particle Q at time $t = 2$. Is the speed of particle Q increasing, decreasing, or neither at time $t = 2$? Explain your reasoning.

- (d) Find the position of particle Q the first time it changes direction.

Do not write beyond this border.

NO CALCULATOR ALLOWED

x	$g(x)$	$g'(x)$
-5	10	-3
-4	5	-1
-3	2	4
-2	3	1
-1	1	-2
0	0	-3



Graph of h

6. Let f be the function defined by $f(x) = \cos(2x) + e^{\sin x}$.

Let g be a differentiable function. The table above gives values of g and its derivative g' at selected values of x .

Let h be the function whose graph, consisting of five line segments, is shown in the figure above.

(a) Find the slope of the line tangent to the graph of f at $x = \pi$.

(b) Let k be the function defined by $k(x) = h(f(x))$. Find $k'(\pi)$.

Do not write beyond this border.

Do not write beyond this border.

NO CALCULATOR ALLOWED

(c) Let m be the function defined by $m(x) = g(-2x) \cdot h(x)$. Find $m'(2)$.

Do not write beyond this border.

(d) Is there a number c in the closed interval $[-5, -3]$ such that $g'(c) = -4$? Justify your answer.