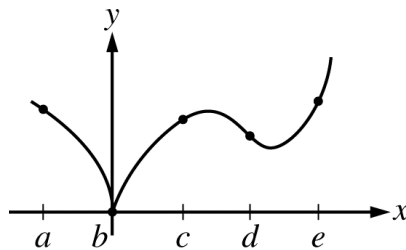


Velocity and Other Rate of Change (AP Questions)

1. A particle moves along the x -axis with its position at time t given by $x(t) = (t - a)(t - b)$, where a and b are constants and $a \neq b$. For which of the following values of t is the particle at rest?

- (A) $t = ab$
(B) $t = \frac{a+b}{2}$
(C) $t = a + b$
(D) $t = 2(a + b)$
(E) $t = a$ and $t = b$

Graph of f

2. The graph of the function f is shown in the figure above. For which of the following values of x is $f'(x)$ positive and increasing?

- (A) a
(B) b
(C) c
(D) d
(E) e